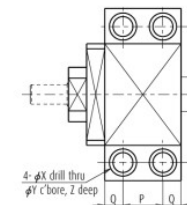
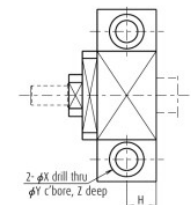
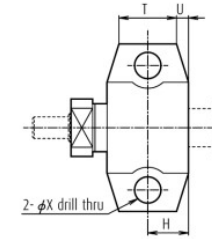
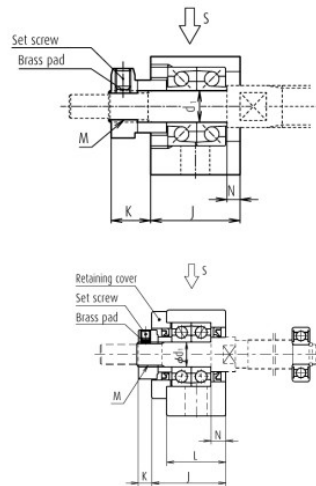
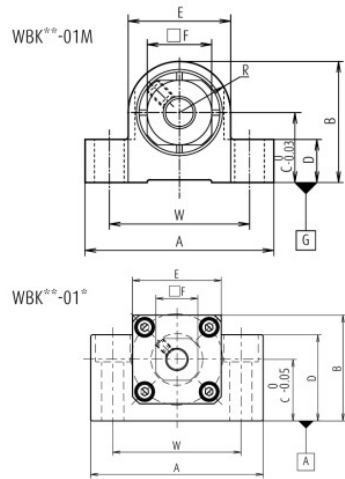


Accessories

Support Unit (Support Units for Light Load and Small Equipment)

Support Units for Light Load and Small Equipment



Reference No.	Tightening torque (reference) [N·cm]	
	Locknut	Set screw
WBK04-01M	100	69 (M3)
WBK06-01M	190	69 (M3)
WBK08-01M	230	69 (M3)
WBK10-01M	280	147 (M4)
WBK12-01M	630	147 (M4)
WBK15-01M	790	147 (M4)
WBK17-01M	910	147 (M4)
WBK20-01M	1670	147 (M4)
WBK25-01M	2060	490 (M6)

Fixed support side support unit (square type)

Reference No.	Use	d ₁	A	B	C	D	E	F	L	J	K	R
WBK04-01M	General	4	27	17	10	6	14	10	—	14	5.5	7
WBK06-01M	General	6	35	22.5	13	8	19	12	—	17	7.5	9.5
WBK06-01A*1	General	6	42	25	13	20	18	12	20	20	5.5	—
WBK08-01A*1	General	8	52	32	17	26	25	14	23	23	7	—
WBK08-01B	Low type	8	62	31	15.5	31	—	14	21.5	25.5	4.5	—
WBK08-01C*1	Clean environment	8	52	32	17	26	25	14	23	23	7	—
WBK10-01A	General	10	70	43	25	35	36	17	24	30	5.5	—
WBK10-01B	Low type	10	70	38	20	38	—	17	24	30	5.5	—
WBK10-01C	Clean environment	10	70	43	25	35	36	17	24	30	5.5	—
WBK12-01A	General	12	70	43	25	35	36	19	24	30	5.5	—
WBK12-01B	Low type	12	70	38	20	38	—	19	24	30	5.5	—
WBK12-01C	Clean environment	12	70	43	25	35	36	19	24	30	5.5	—
WBK15-01A	General	15	80	50	30	40	41	22	25	31	12	—
WBK15-01B	Low type	15	80	42	22	42	—	22	25	31	12	—
WBK15-01C	Clean environment	15	80	50	30	40	41	22	25	31	12	—
WBK17-01A	General	17	86	64	39	55	50	24	35	44	7	—
WBK20-01	General	20	95	58	30	45	56	30	42	52	10	—
WBK25-01W	General	25	105	68	35	25	66	36	48	61	13	—

- Notes**
1. Use datum surface A for mounting to machine base.
 2. Tighten set screw after locknut has been adjusted and tightened.
 3. Insert brass pad provided with unit into locknut set screw hole, then insert and tighten the set screw.
 4. Deep groove ball bearing and snap ring are also provided for simple support side. (except WBK04-01M and WBK06-01M)

T	U	N	Counterbore dimensions							Mass (kg)	Locknut screw M	Attached bearing for support side
			H	P	Q	W	X	Y	Z			
9	2.5	2	7	—	—	21	3.5	—	—	0.03	M4×0.5	—
12	2.5	2.5	8.5	—	—	26	5.5	—	—	0.05	M6×0.75	—
—	—	3.5	10	—	—	30	5.5	9.5	11	0.15	M6×0.75	—
—	—	4	11.5	—	—	38	6.6	11	12	0.25	M8×1	606ZZ
—	—	3.5	11	—	—	46	9	14	18	0.3	M8×1	606ZZ
—	—	4	11.5	—	—	38	6.6	11	12	0.25	M8×1	606ZZ
—	—	6	12	—	—	52	9	14	11	0.5	M10×1	608ZZ
—	—	6	12	—	—	52	9	14	19	0.45	M10×1	608ZZ
—	—	6	12	—	—	52	9	14	11	0.5	M10×1	608VV
—	—	6	12	—	—	52	9	14	11	0.5	M12×1	6000ZZ
—	—	6	12	—	—	52	9	14	19	0.4	M12×1	6000ZZ
—	—	6	12	—	—	52	9	14	11	0.5	M12×1	6000VV
—	—	5	12.5	—	—	60	11	17	15	0.7	M15×1	6002ZZ
—	—	5	12.5	—	—	60	11	17	23	0.6	M15×1	6002ZZ
—	—	5	12.5	—	—	60	11	17	15	0.7	M15×1	6002VV
—	—	7	—	19	8	68	9	14	11	1.3	M17×1	6203ZZ
—	—	10	—	22	10	75	11	17	15	1.4	M20×1	6204ZZ
—	—	14	—	30	9	85	11	—	—	1.9	M25×1.5	6205ZZ

5. Bearings for WBK04-01M and WBK06-01M are equipped with non-contact metal shield.
 *1) For retaining cover side of WBK06-01A, WBK08-01A, and WBK08-01C, there are no seals.
 6. Contact NSK if the rotational speed is 50 min⁻¹ and below.