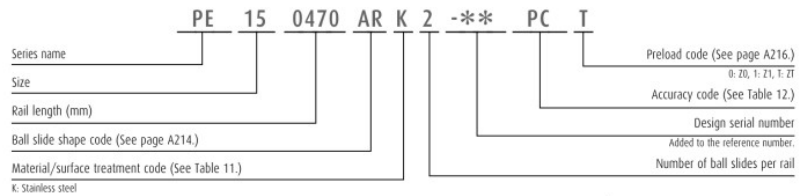


### A-5-2.3 PE Series (Miniature wide type)

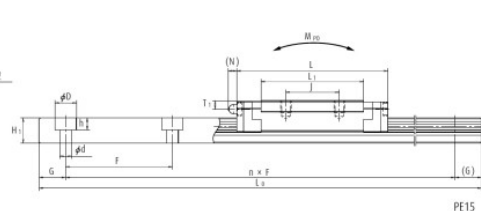
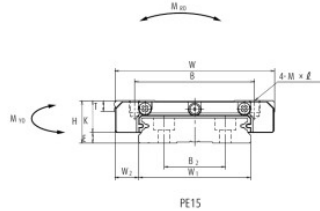
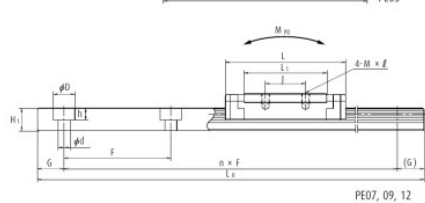
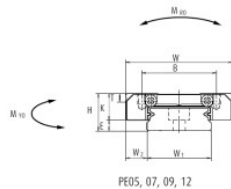
#### 9. Dimensions

PE-AR, TR (Standard type / Standard)  
PE-UR, BR (High-load type / Long)



Front view

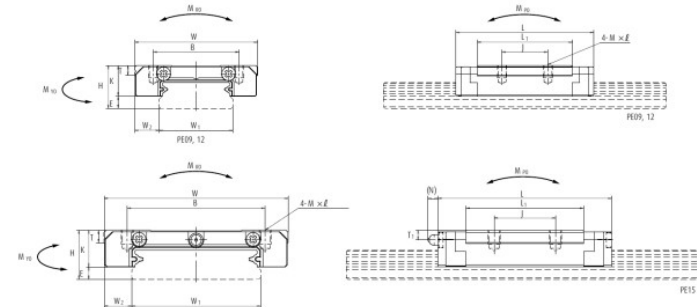
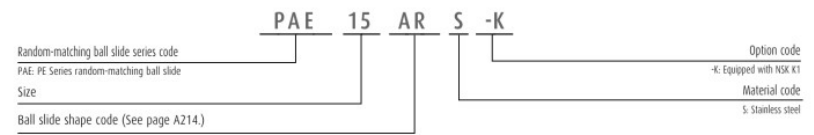
Side view



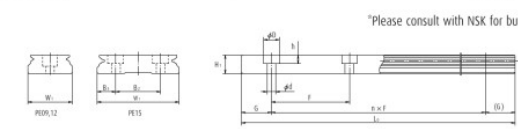
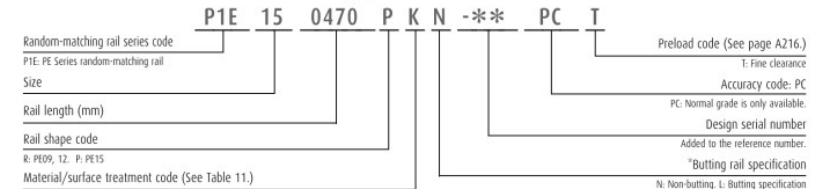
Model No.	Assembly			Ball slide										Width	Height	
	Height	E	W <sub>2</sub>	W	Length	Mounting hole			Oil hole							
						B	J	M × pitch × ℓ	L <sub>1</sub>	K	T	Hole size	T <sub>1</sub>			N
PE05AR	6.5	1.4	3.5	17	24.1	13	—	M2.5×0.45×1.5	16.4	5.1	2.5	φ 0.9	1.3	—	10	4
PE07TR	9	2	5.5	25	31.1	19	10	M3×0.5×2.8	20.8	7	3	φ 1.9	1.9	—	14	5.2
PE09TR	12	4	6	30	39.8	21	12	M3×0.5×3	26.6	8	2.8	φ 2	2.3	—	18	7.5
PE09UR	12	4	6	30	51.2	23	24	M3×0.5×3	38	8	2.8	φ 2	2.3	—	18	7.5
PE12AR	14	4	8	40	45	28	15	M3×0.5×4	31	10	3.2	φ 2.5	2.7	—	24	8.5
PE12BR	14	4	8	40	60	28	28	M3×0.5×4	46	10	3.2	φ 2.5	2.7	—	24	8.5
PE15AR	16	4	9	60	56.6	45	20	M4×0.7×4.5	38.4	12	4.1	φ 3	3.2	(3.3)	42	9.5
PE15BR	16	4	9	60	76	45	35	M4×0.7×4.5	57.8	12	4.1	φ 3	3.2	(3.3)	42	9.5

Notes 1) Ball slide of PE05AR has only two mounting tap holes in the center.

#### Reference number for ball slide of random-matching type



#### Reference number for rail of random-matching type



Unit: mm

Rail				Basic loading rating								Weight		
B <sub>2</sub>	F	Mounting bolt hole d × D × h	G (reference)	Maximum length L <sub>0max</sub>	Dynamic		C <sub>10</sub> (N)	M <sub>RO</sub> (N)	Static moment (N-m)				Ball slide (g)	Rail (g/100 mm)
					C <sub>50</sub> (N)	C <sub>100</sub> (N)			M <sub>PO</sub>		M <sub>VO</sub>			
									One slide	Two slides	One slide	Two slides		
—	20	3×5×1.6	7.5	150	690	550	1 160	6.00	2.75	17.5	2.75	17.5	7	34
—	30	3.5×6×3.2	10	600	1 580	1 260	2 350	16.7	7.20	46.0	7.20	46.0	19	55
—	30	3.5×6×4.5	10	800	3 000	2 390	4 500	36.5	17.3	113	17.3	113	35	95
—	30	3.5×6×4.5	10	800	4 000	3 150	6 700	54.5	37.5	210	37.5	210	50	95
—	40	4.5×8×4.5	15	1 000	4 350	3 450	6 350	70.5	29.3	180	29.3	180	66	140
—	40	4.5×8×4.5	15	1 000	5 800	4 600	9 550	106	63.5	345	63.5	345	98	140
23	40	4.5×8×4.5	15	1 200	7 600	6 050	10 400	207	59.0	370	59.0	370	140	275
23	40	4.5×8×4.5	15	1 200	10 300	8 200	16 000	320	135	740	135	740	211	275

2) The basic loading rating comply with the ISO standard. (ISO 14728-1, 14728-2)  
C<sub>50</sub>: the basic dynamic load rating for 50 km rated fatigue life C<sub>100</sub>: the basic dynamic load rating for 100 km rated fatigue life  
5) To fix rail of PE05AR, use M2.5 × 0.45 cross-recessed pan head machine screw for precision instrument.  
(JCS 10-70 No. 0 pan head machine screw No.3.)  
(JCS: Japanese Camera Industrial Standard.)