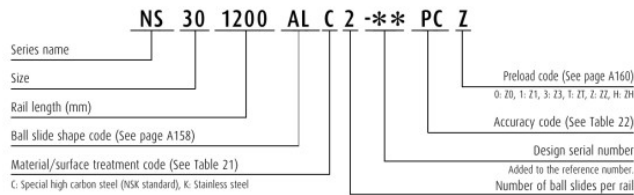


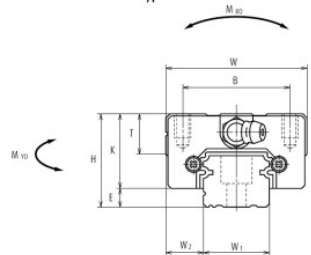
A-5-1.4 NS Series

10. Dimensions

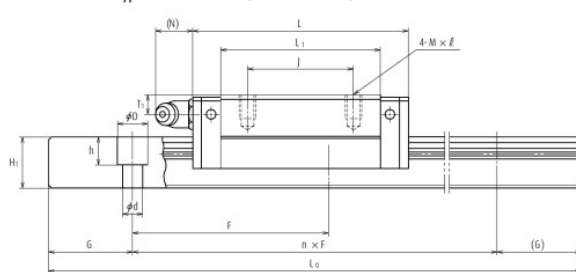
NS-CL (Medium-load type / Short)
NS-AL (High-load type / Standard)



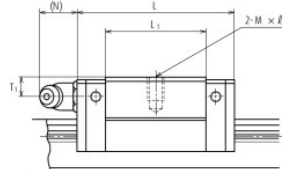
Front view of AL and CL type



Side view of AL type



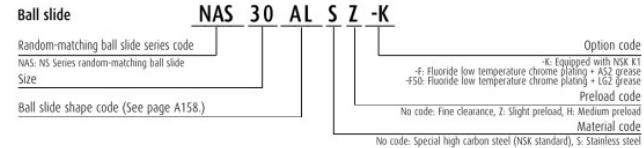
Side view of CL type



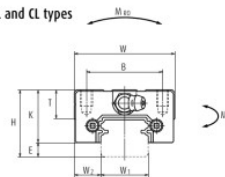
Model No.	Assembly			Ball slide										Width	Height	
	Height	E	W ₂	Width	Length	Mounting hole				Grease fitting			W ₁			H ₁
						B	J	M × pitch × l	L ₁	K	T	Hole size				
NS15CL	24	4.6	9.5	34	40.4	26	-	M4×0.7×6	23.6	19.4	10	φ 3	6	3	15	12.5
NS15AL	24	4.6	9.5	34	56.8	26	26	M4×0.7×6	40	19.4	10	φ 3	6	3	15	12.5
NS20CL	28	6	11	42	47.2	32	-	M5×0.8×7	30	22	12	M6×0.75	5.5	11	20	15.5
NS20AL	28	6	11	42	65.2	32	32	M5×0.8×7	48	22	12	M6×0.75	5.5	11	20	15.5
NS25CL	33	7	12.5	48	59.6	35	-	M6×1×9	38	26	12	M6×0.75	7	11	23	18
NS25AL	33	7	12.5	48	81.6	35	35	M6×1×9	60	26	12	M6×0.75	7	11	23	18
NS30CL	42	9	16	60	67.4	40	-	M8×1.25×12	42	33	13	M6×0.75	8	11	28	23
NS30AL	42	9	16	60	96.4	40	40	M8×1.25×12	71	33	13	M6×0.75	8	11	28	23
NS35CL	48	10.5	18	70	77	50	-	M8×1.25×12	49	37.5	14	M6×0.75	8.5	11	34	27.5
NS35AL	48	10.5	18	70	108	50	50	M8×1.25×12	80	37.5	14	M6×0.75	8.5	11	34	27.5

Notes 1) External appearance of stainless steel ball slides differs from those of carbon steel ball slides.

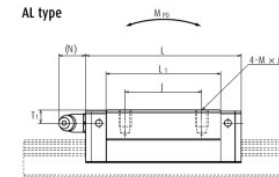
Reference number for ball slide of random-matching type



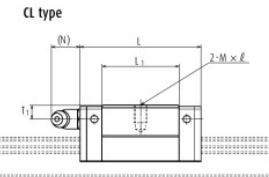
AL and CL types



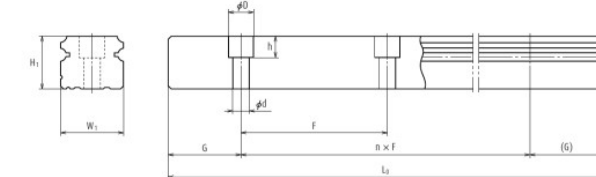
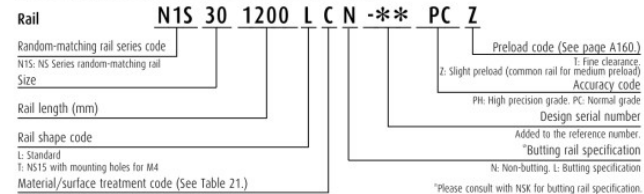
AL type



CL type



Reference number for rail of random-matching type



Unit: mm

Pitch	Rail			Basic load rating								Weight	
	Mounting bolt hole d × D × h	G (reference)	Maximum length L _{max} () for stainless	2) Dynamic		Static C ₀ (N)	M _{R0}	Static moment (N-m)				Ball slide (kg)	Rail (kg/m)
				[50km] C ₅₀ (N)	[100km] C ₁₀₀ (N)			M _{P0}		M _{V0}			
60	*3.5×6×4.5	20	2 920	7 250	5 750	9 100	45.5	24.5	196	20.5	165	0.14	1.4
60	4.5×7.5×5.3	20	(1 700)	11 200	8 850	16 900	84.5	77	470	64.5	395	0.20	1.4
60	6×9.5×8.5	20	3 960	10 600	8 400	13 400	91.5	46.5	330	39	279	0.19	2.3
60	6×9.5×8.5	20	(3 500)	15 600	12 400	23 500	160	133	755	111	630	0.28	2.3
60	7×11×9	20	3 960	17 700	14 000	20 800	164	91	655	76	550	0.34	3.1
60	7×11×9	20	(3 500)	26 100	20 700	36 500	286	258	1 470	217	1 230	0.51	3.1
80	7×11×9	20	4 000	24 700	19 600	29 600	282	139	1 080	116	905	0.58	4.8
80	7×11×9	20	(3 500)	38 000	30 000	55 000	520	435	2 650	365	2 220	0.85	4.8
80	9×14×12	20	4 000	34 500	27 300	40 000	465	220	1 670	185	1 400	0.86	7.0
80	9×14×12	20	(3 500)	52 500	42 000	74 500	865	695	4 000	580	3 350	1.3	7.0

2) The basic load rating comply with the ISO standard. (ISO 14728-1, 14728-2)
C₅₀: the basic dynamic load rating for 50 km rated fatigue life C₁₀₀: the basic dynamic load rating for 100 km rated fatigue life
The basic static load rating shows static permissible load.
3) High-precision grade and medium preload of random-matching type are available for special high carbon steel products.
* Standard mounting hole of NS15 rail is for M3 bolts (Hole size: 3.5 × 6 × 4.5).
If you require mounting hole for M4 bolts (Hole size: 4.5 × 7.5 × 5.3), please specify when ordering.